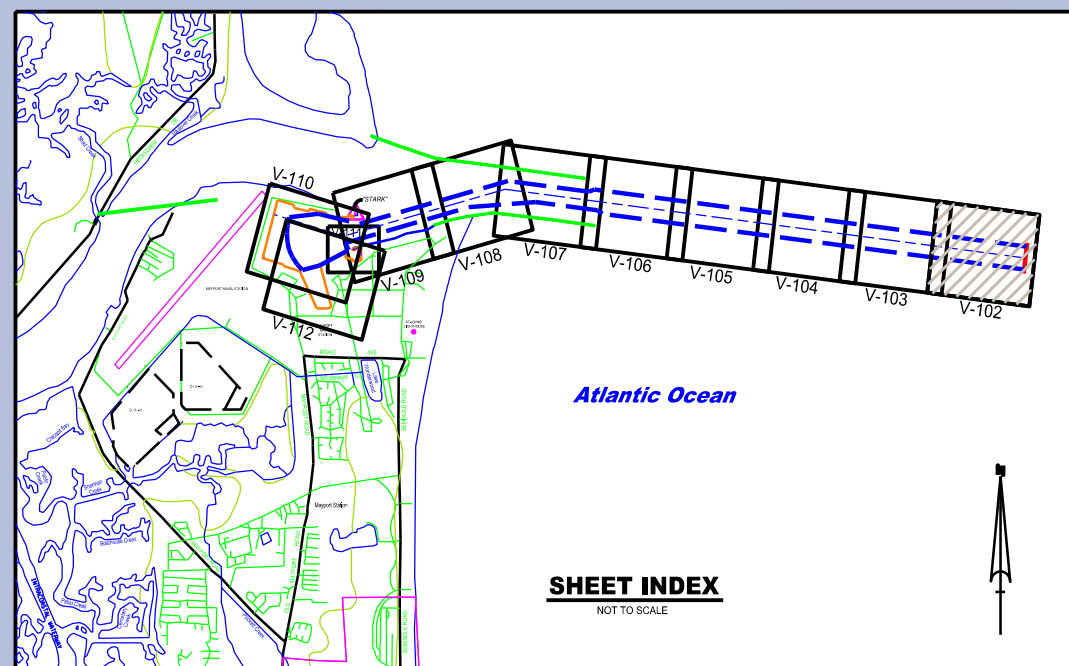


MATCHLINE DWG. V-103 STA. 33+00 BAR CUT-3

STA. 0+00 BAR CUT-3

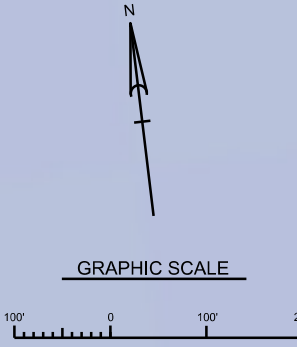
50



SHEET INDEX  
NOT TO SCALE

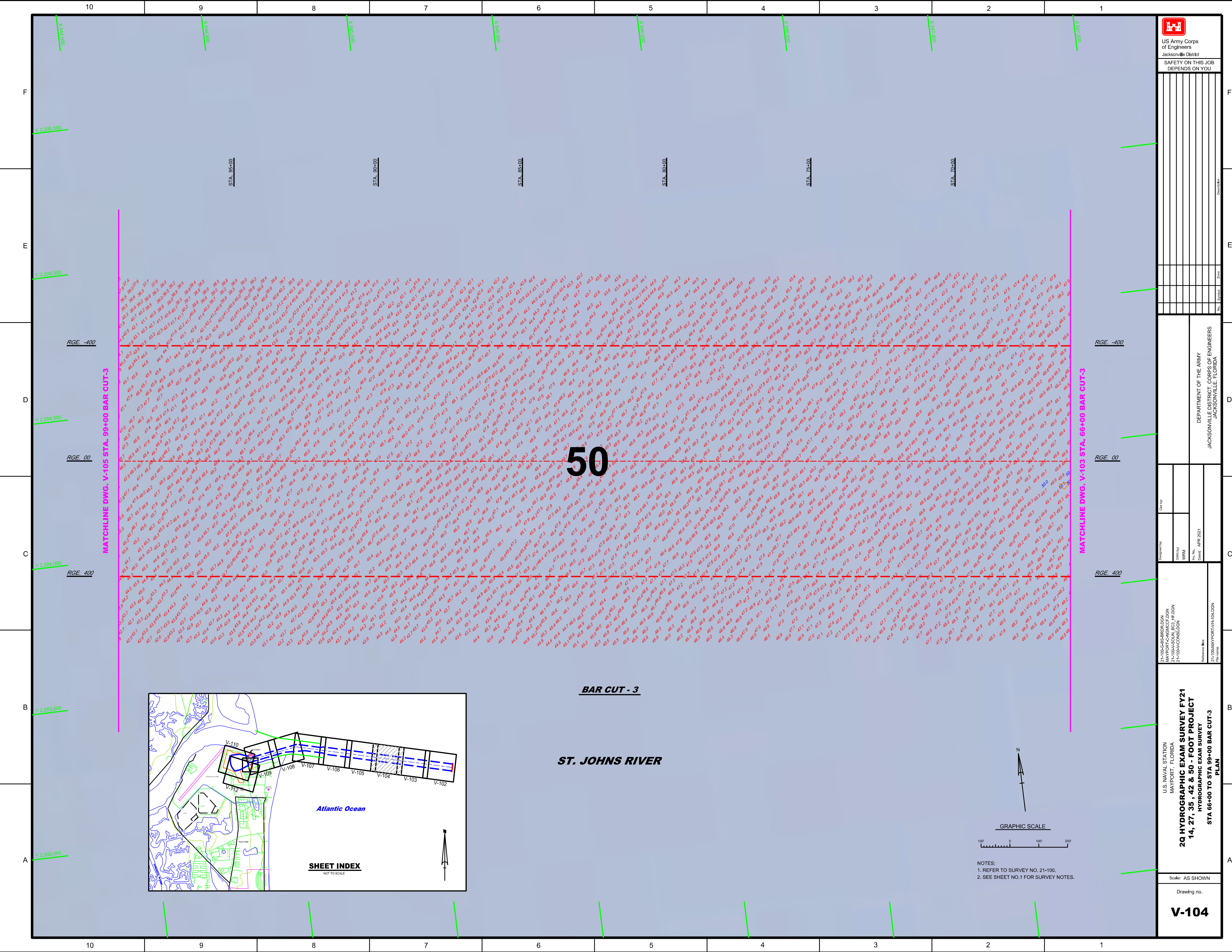
**BAR CUT - 3**

**ST. JOHNS RIVER**



NOTES:  
1. REFER TO SURVEY NO. 21-100.  
2. SEE SHEET NO.1 FOR SURVEY NOTES.





REV.	DATE	BY	CHKD.	DESCRIPTION

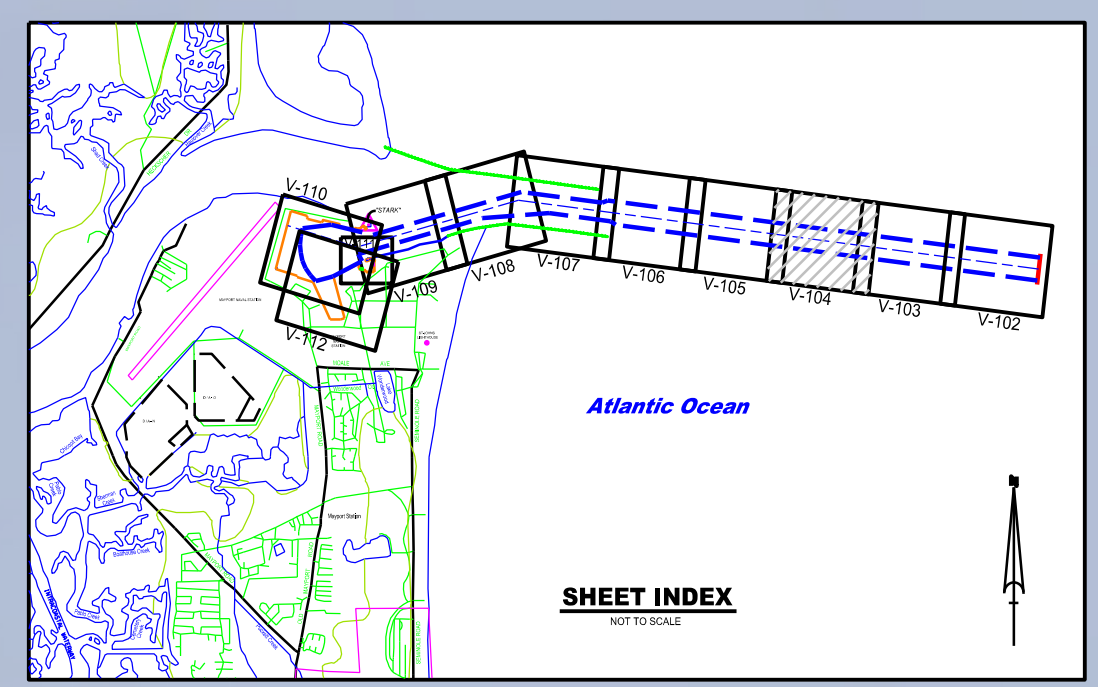
DEPARTMENT OF THE ARMY  
 JACKSONVILLE DISTRICT, CORPS OF ENGINEERS  
 JACKSONVILLE, FLORIDA

Drawn by:   
 Checked by:   
 Date: APR 2021

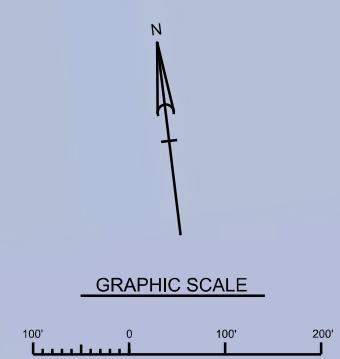
U.S. NAVAL STATION  
 MAYPORT, FLORIDA  
 2Q HYDROGRAPHIC EXAM SURVEY FY21  
 14, 27, 35, 42 & 50 - FOOT PROJECT  
 HYDROGRAPHIC EXAM SURVEY  
 STA 66+00 TO STA 99+00 BAR CUT-3  
 PLAN

Scale: AS SHOWN  
 Drawing no.  
**V-104**

**50**



**BAR CUT - 3**  
**ST. JOHNS RIVER**



NOTES:  
 1. REFER TO SURVEY NO. 21-100.  
 2. SEE SHEET NO.1 FOR SURVEY NOTES.



MAP LABEL	AIDS TO NAVIGATION	PLANE COORDINATES		LATITUDE	LONGITUDE
		X	Y		
G*5	LT. BUOY-5 (12/20)	538,440	2,204,222	30°23'46.41"	81°22'24.28"
R*6	LT. BUOY-6 (12/20)	538,460	2,205,588	30°23'59.93"	81°22'24.10"

STA. 165+00

STA. 155+00

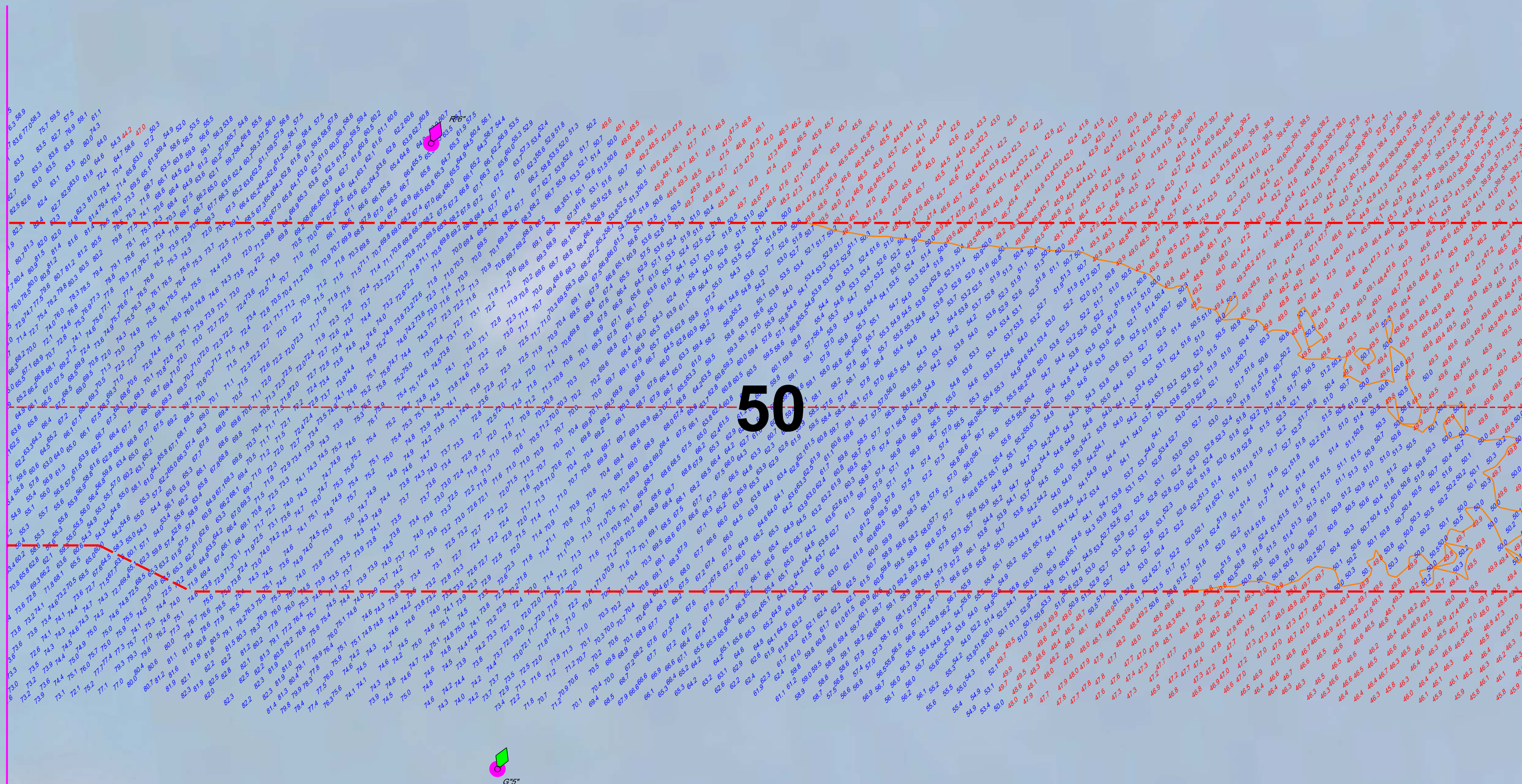
STA. 150+00

STA. 145+00

STA. 135+00

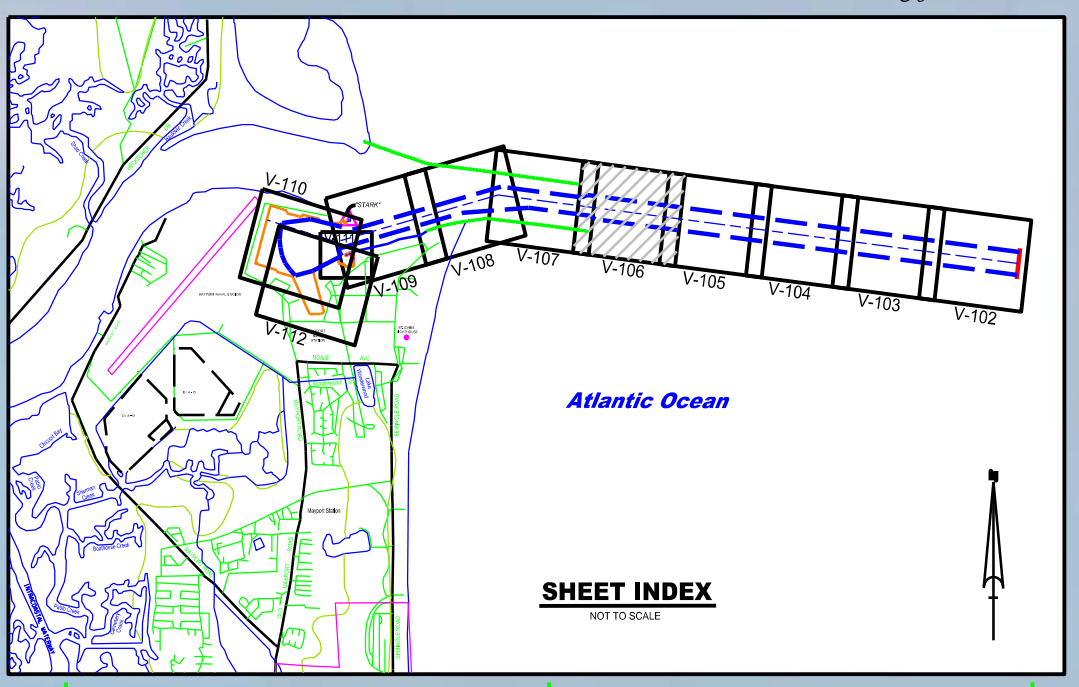
MATCHLINE DWG. V-107 STA. 165+00 BAR CUT-3

MATCHLINE DWG. V-105 STA. 132+00 BAR CUT-3

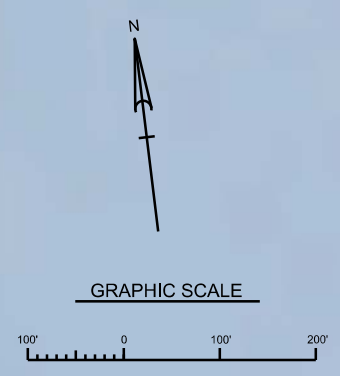


**BAR CUT - 3**

**ST. JOHNS RIVER**



**SHEET INDEX**  
NOT TO SCALE



NOTES:  
1. REFER TO SURVEY NO. 21-100.  
2. SEE SHEET NO.1 FOR SURVEY NOTES.

U.S. NAVAL STATION  
MAYPORT, FLORIDA  
21-100A-B-S-BRIDLIN  
MAYPORT-ENGINEERING  
21-100A-C-CONSDGN  
21-100A-NAV-DGN  
21-100A-VPORT-VH-106-DGN  
Reference files:  
21-100A-VPORT-VH-106-DGN  
File name:

Scale: AS SHOWN

Drawing no.

**V-106**

DEPARTMENT OF THE ARMY  
JACKSONVILLE DISTRICT, CORPS OF ENGINEERS  
JACKSONVILLE, FLORIDA

Designed by:  
Checked by:  
Drawn by:  
Reviewed by:  
Date: APR 2021

MAP LABEL	AIDS TO NAVIGATION	PLANE COORDINATES		LATITUDE	LONGITUDE
		X	Y		
G*7	LT. BUOY-7 (04/21)	534,991	2,204,888	30°23'52.89"	81°23'03.69"
R*8	LT. BUOY-8 (04/21)	535,316	2,205,784	30°24'01.77"	81°23'00.00"

STA. 185+00

STA. 180+00

STA. 185+00

STA. 180+00

STA. 175+00

STA. 170+00

F

E

D

C

B

A

F

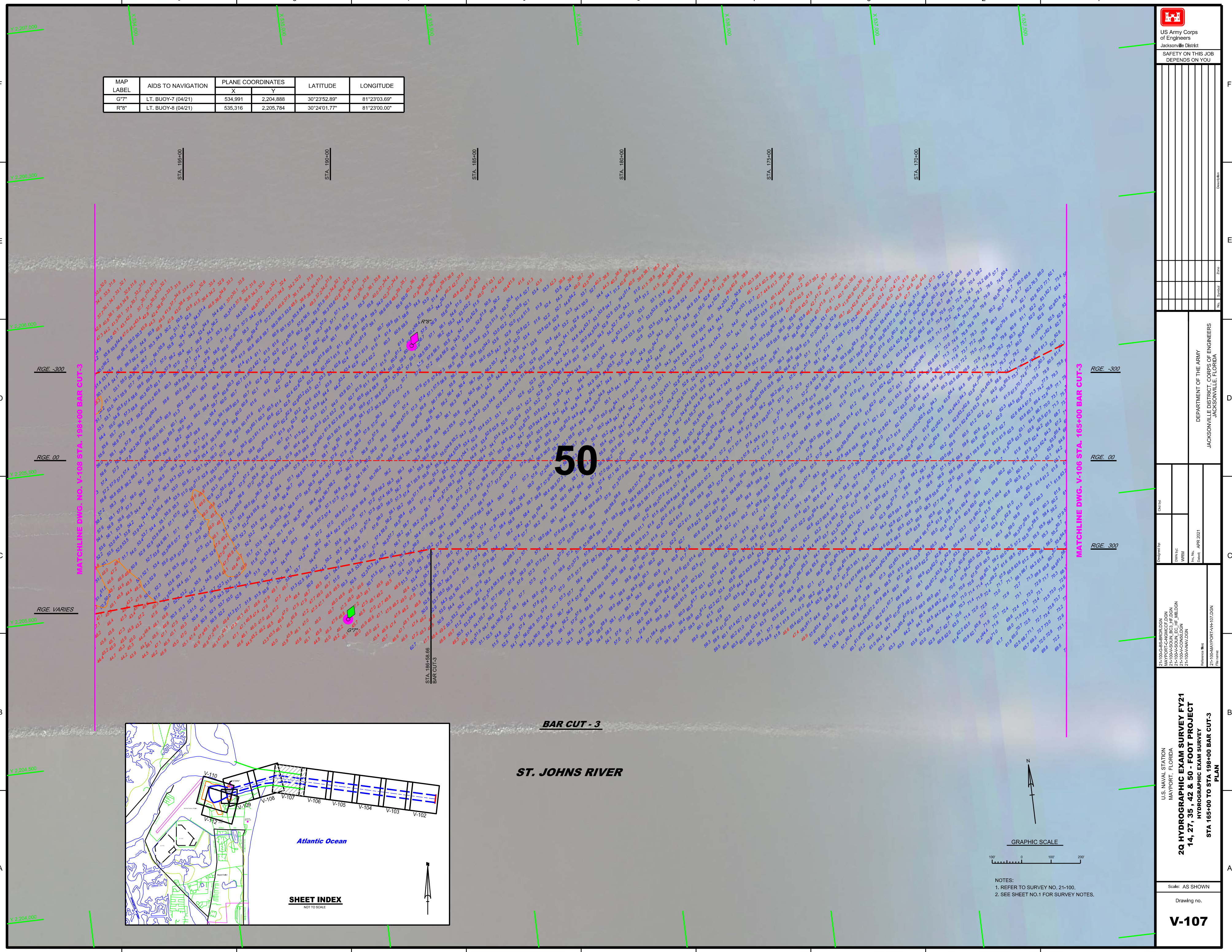
E

D

C

B

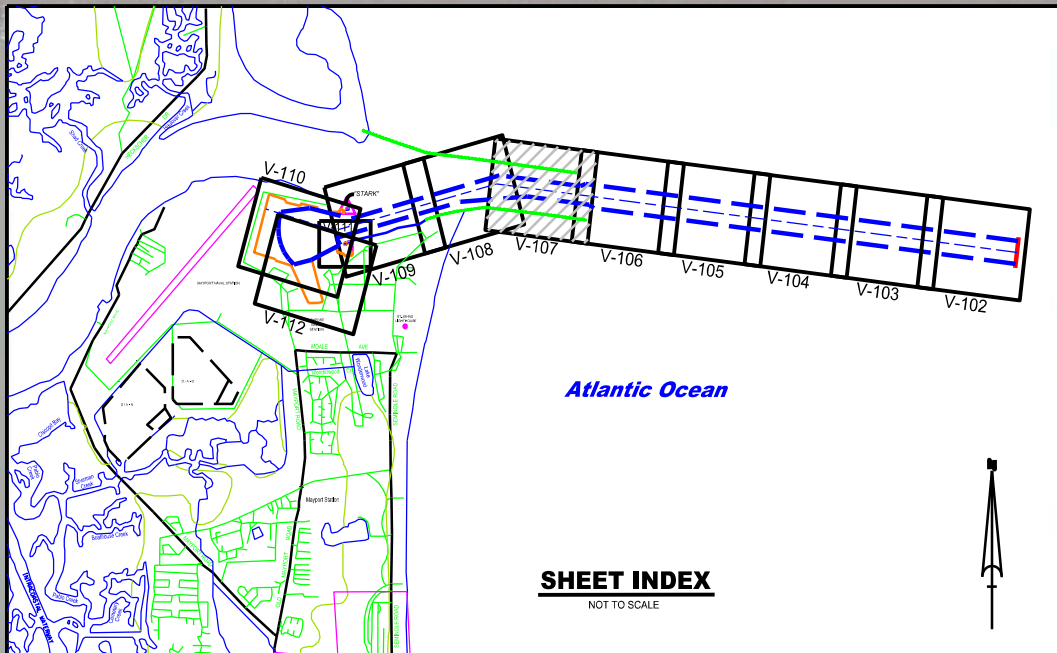
A



50

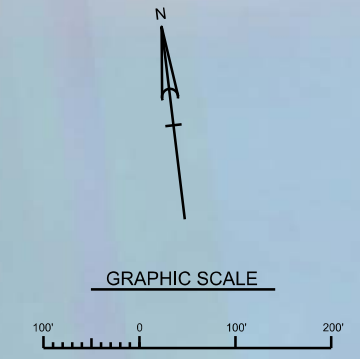
MATCHLINE DWG. NO. V-106 STA. 198+00 BAR CUT-3

MATCHLINE DWG. V-106 STA. 165+00 BAR CUT-3



**BAR CUT - 3**

**ST. JOHNS RIVER**



NOTES:  
1. REFER TO SURVEY NO. 21-100.  
2. SEE SHEET NO.1 FOR SURVEY NOTES.

Designed by:  
21-100G-SB-BIRDSON  
MAYPORT-NGRICE.DGN

Drawn by:  
WRM

Checked by:  
WRM

Date:  
APR 2021

U.S. NAVAL STATION  
MAYPORT, FLORIDA

**20 HYDROGRAPHIC EXAM SURVEY FY21  
14, 27, 35, 42 & 50 - FOOT PROJECT**

HYDROGRAPHIC EXAM SURVEY  
STA 165+00 TO STA 198+00 BAR CUT-3

Scale: AS SHOWN

Drawing no.

Rev.	Symbol	Date	Zone

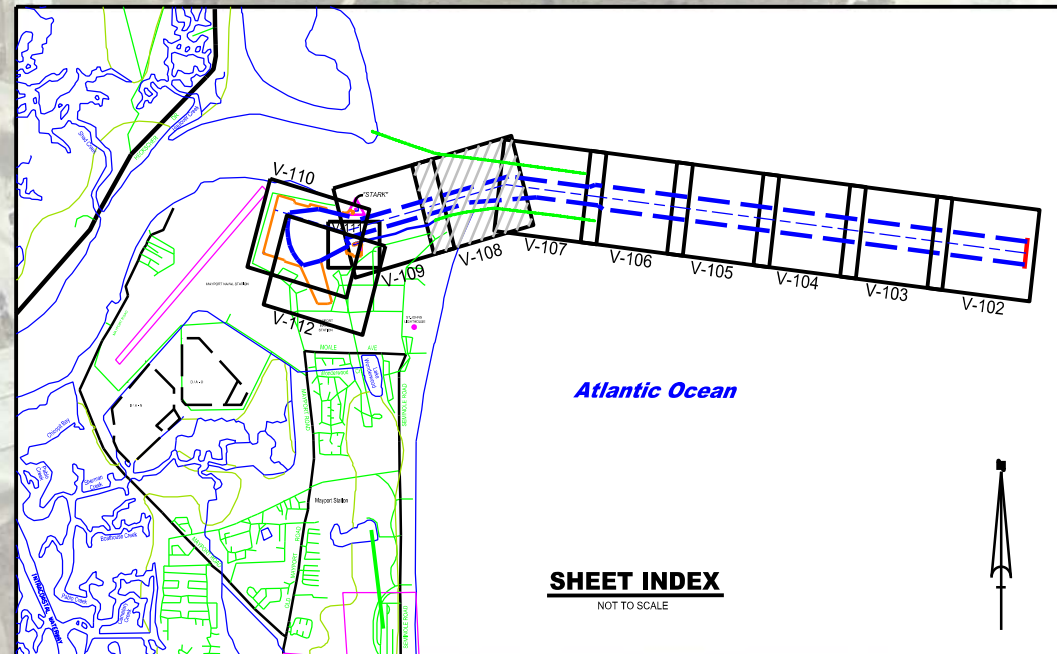
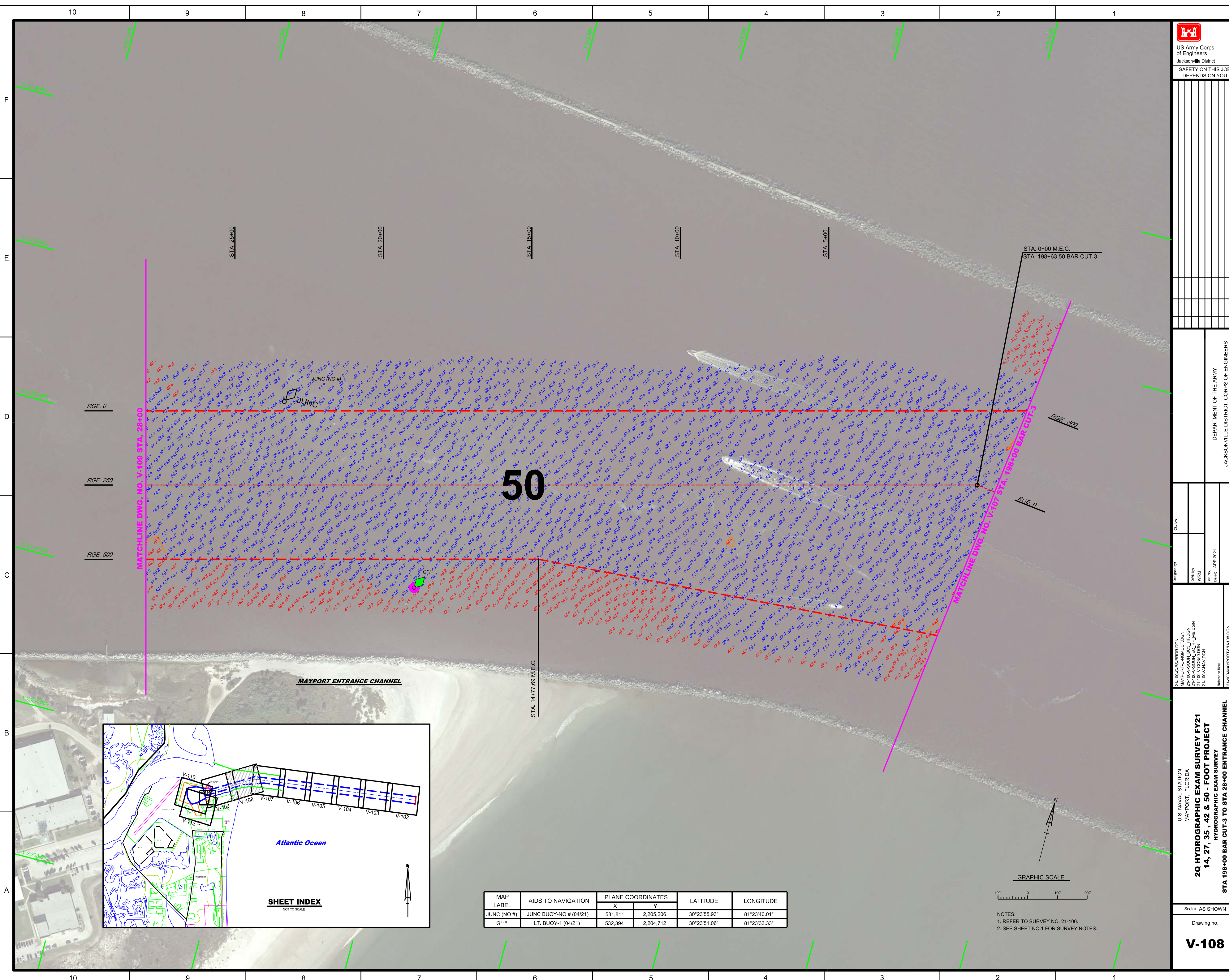
DEPARTMENT OF THE ARMY  
JACKSONVILLE DISTRICT, CORPS OF ENGINEERS  
JACKSONVILLE, FLORIDA

Drawn by: [Blank]  
Checked by: [Blank]  
Date: APR 2021

21-100-08-BR001.DGN  
21-100-08-ENG001.DGN  
21-100-08-PLAN001.DGN  
21-100-08-CON001.DGN  
21-100-08-NAV.DGN

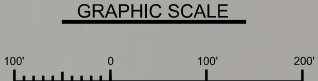
U.S. NAVAL STATION  
MAYPORT, FLORIDA  
2Q HYDROGRAPHIC EXAM SURVEY FY21  
14, 27, 35, 42 & 50 - FOOT PROJECT  
HYDROGRAPHIC EXAM SURVEY  
STA 198+00 BAR CUT-3 TO STA 28+00 ENTRANCE CHANNEL  
PLAN

Scale: AS SHOWN  
Drawing no.  
**V-108**



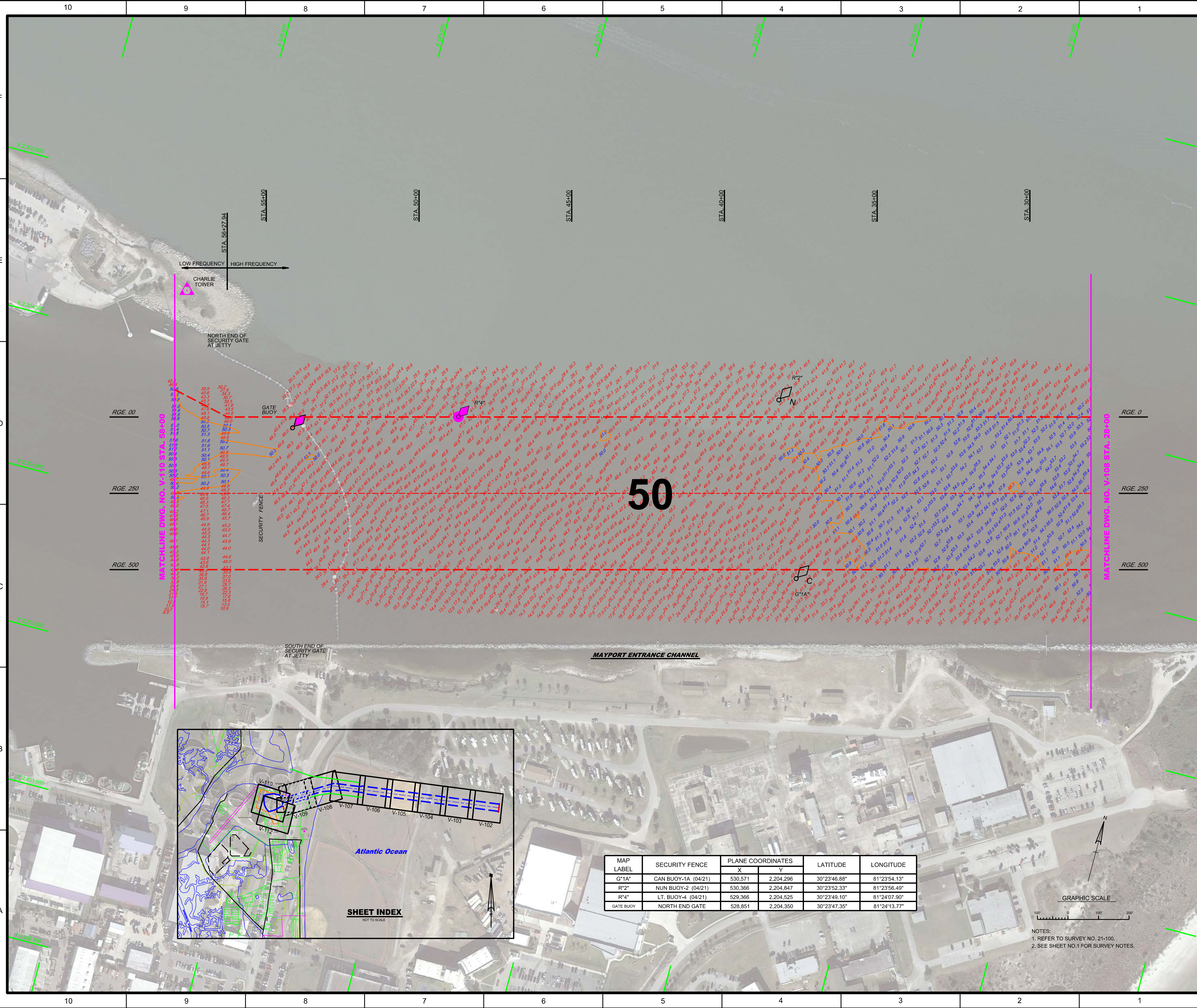
**SHEET INDEX**  
NOT TO SCALE

MAP LABEL	AIDS TO NAVIGATION	PLANE COORDINATES		LATITUDE	LONGITUDE
		X	Y		
JUNC (NO #)	JUNC BUOY-NO # (04/21)	531,811	2,205,206	30°23'55.93"	81°23'40.01"
G*1"	LT. BUOY-1 (04/21)	532,394	2,204,712	30°23'51.06"	81°23'33.33"



NOTES:  
1. REFER TO SURVEY NO. 21-100.  
2. SEE SHEET NO.1 FOR SURVEY NOTES.

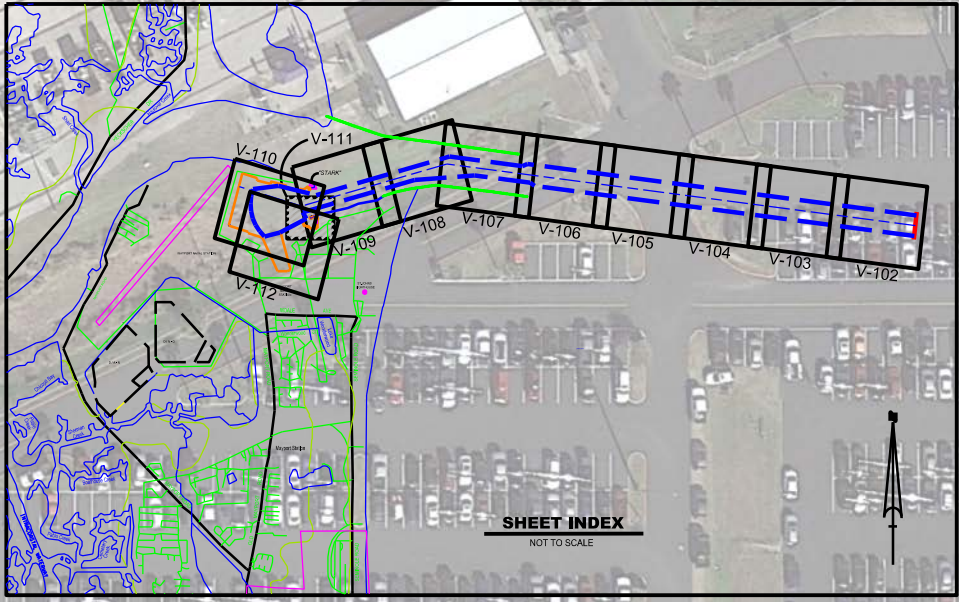
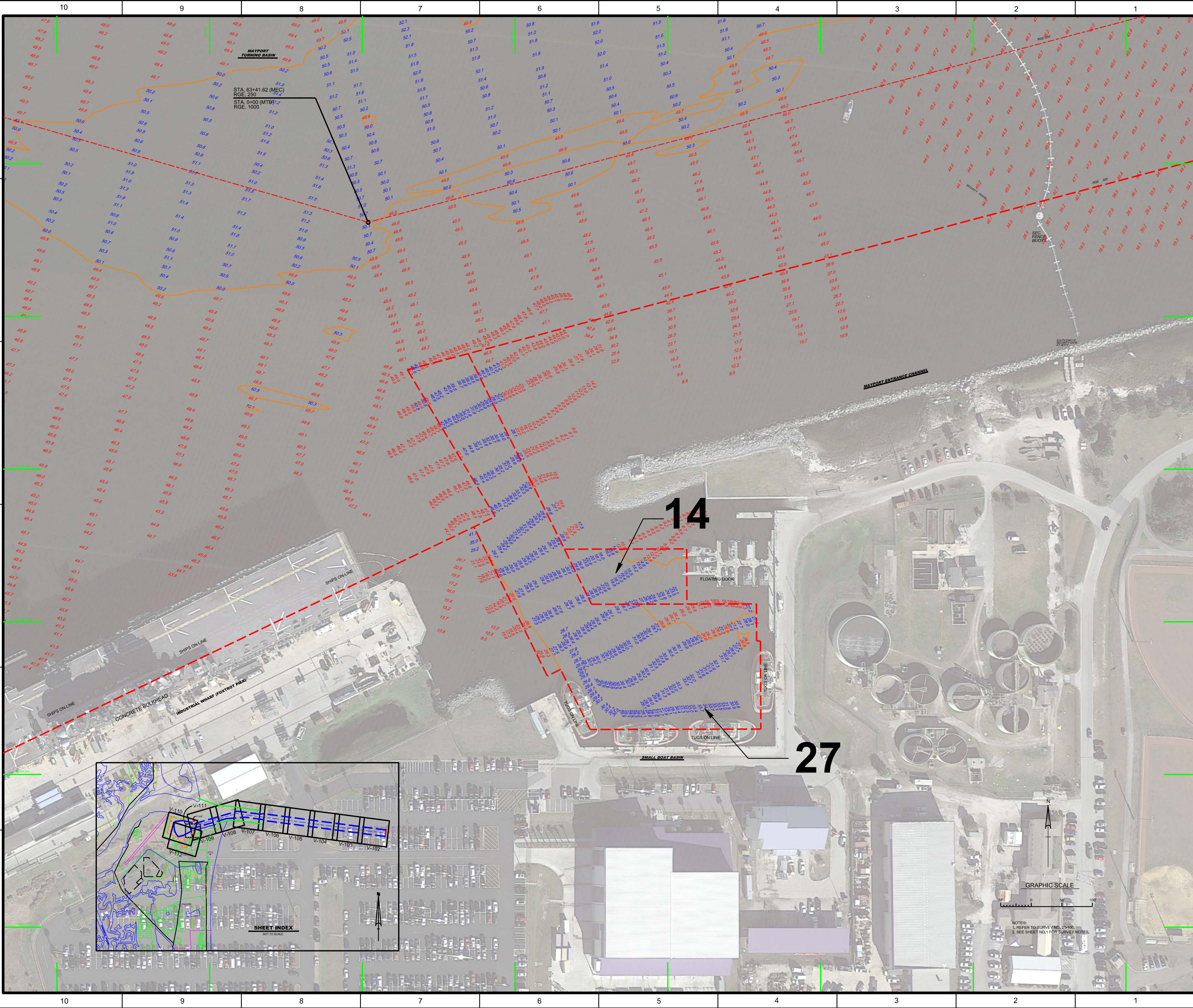




MAP LABEL	SECURITY FENCE	PLANE COORDINATES		LATITUDE	LONGITUDE
		X	Y		
G*1A	CAN BUOY-1A (04/21)	530,571	2,204,296	30°23'46.88"	81°23'54.13"
R*2	NUN BUOY-2 (04/21)	530,366	2,204,847	30°23'52.33"	81°23'56.49"
R*4	LT. BUOY-4 (04/21)	529,366	2,204,525	30°23'49.10"	81°24'07.90"
GATE BUOY	NORTH END GATE	528,851	2,204,350	30°23'47.35"	81°24'13.77"

NOTES:  
1. REFER TO SURVEY NO. 21-100.  
2. SEE SHEET NO.1 FOR SURVEY NOTES.





<p>US Army Corps of Engineers Jacksonville District</p>	
<p>SAFETY ON THIS JOB DEPENDS ON YOU</p>	
<p>DEPARTMENT OF THE ARMY JACKSONVILLE DISTRICT, CORPS OF ENGINEERS JACKSONVILLE, FLORIDA</p>	
<p>Checked By:</p>	<p>Designed By:</p>
<p>Drawn By:</p>	<p>21-100-ANAV/DGN</p>
<p>Reviewed By:</p>	<p>21-100-AS-BR/DGN</p>
<p>Date:</p>	<p>21-100-ANAV/DGN</p>
<p>Scale:</p>	<p>AS SHOWN</p>
<p>Drawing No.</p>	<p>V-111</p>
<p>20 HYDROGRAPHIC EXAM SURVEY FY21 14, 27, 35, 42 &amp; 50 - FOOT PROJECT HYDROGRAPHIC EXAM SURVEY SMALL BOAT BASIN PLAN</p>	

50

35

35

MAYPORT TURNING BASIN

INDUSTRIAL WHARF  
 (FOXTROT PIER)

SMALL BOAT BASIN

SLIP

STA. 5+00 D.S.

STA. 10+00 D.S.

RGE. 23.0

STA. 15+46.3 D.S.  
 RGE. 250

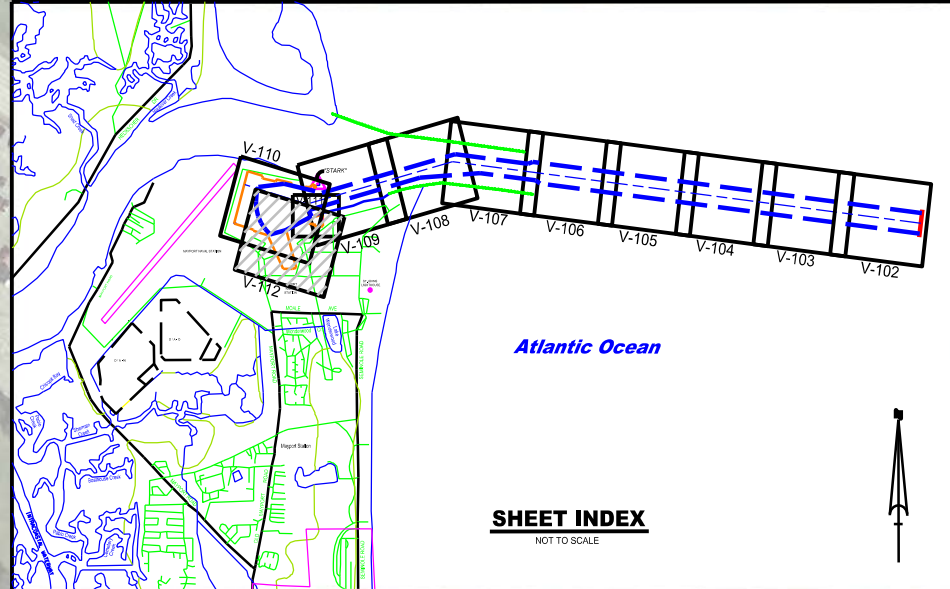
STA. 16+12 D.S.  
 RGE. 363.7

STA. 16+31.3 D.S.  
 RGE. 490.4



GRAPHIC SCALE  
 100' 0 100' 200'

NOTES:  
 1. REFER TO SURVEY NO. 21-100.  
 2. SEE SHEET NO.1 FOR SURVEY NOTES.



DEPARTMENT OF THE ARMY  
 JACKSONVILLE DISTRICT, CORPS OF ENGINEERS  
 JACKSONVILLE, FLORIDA

21-100-GS-BRDLDGN  
 MAYPORT-HIGHWATER POND  
 21-100-AACONSDGN

U.S. NAVAL STATION  
 MAYPORT, FLORIDA  
**20 HYDROGRAPHIC EXAM SURVEY FY21  
 14, 27, 35, 42 & 50 - FOOT PROJECT**  
 HYDROGRAPHIC EXAM SURVEY  
 DESTROYER SLIP  
 PLAN

Scale: AS SHOWN  
 Drawing no.  
**V-112**